



HILLS • FORREST • SMITH

golf course architects



BOLD. | Original. | *Timeless.*

INTRODUCTION

Hills·Forrest·Smith [golf course architects] is an international golf course design firm founded by the late Arthur Hills in 1966. Since that time the Hills Team has worked on over 200 new course designs and 150 renovations on five continents. The firm's reputation, built by a half century of award-winning designs, rests on its ability to design distinctive golf courses that are both playable and challenging; dramatic and innovative, yet traditional; and constructed to the highest standards of environmental sensitivity. The following document is intended as an introduction to our team and the services we provide. We welcome the opportunity to assist you with your project.



STEVE FORREST

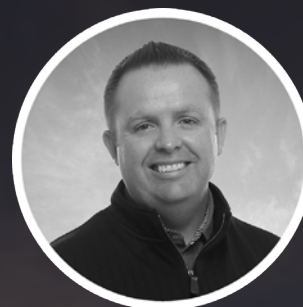
Principal

ASGCA - Past President

Steve Forrest has been a golf course architect since graduating from Virginia Tech in 1979. Since that time, he has been involved in all phases of golf course design and construction and has worked on over 120 new courses on five continents.

A member of the American Society of Golf Course Architects since 1986 and Past President in 2007-2008, Steve has also been the managing partner of Hills·Forrest·Smith since 1999.

His design approach, which was shaped by the “traditionalist” philosophy of Arthur Hills, is to create a challenging, yet playable course which highlights the natural beauty of a given site. He brings this same approach to master planning and renovation. Forrest has been involved in more than 150 renovations and master plans during his career. In 2008, Boardroom Magazine named Forrest as its “Golf Architect of the Year” for his renovation of Naperville Country Club in Illinois.



SHAWN SMITH

Principal

ASGCA

Originally from Montana, Shawn earned a bachelor’s degree in Landscape Architecture from Washington State University and joined the Hills & Forrest team in 1998. Over the past two and a half decades, he has gained a wealth of experience from his direct involvement in numerous projects around the world, including some of the most prestigious private clubs.

Shawn has been a member of the American Society of Golf Course Architects since 2009 and became a Partner in 2010. With a design philosophy shaped by an avid appreciation for classic golf course architecture, Shawn draws influences from the Golden Age of Design and specifically architects such as Alister MacKenzie, Donald Ross and Seth Raynor. Their timeless designs are the basis for Shawn’s design approach of creating golf courses that are a dynamic blend of strategy, playability, artistry and the natural environment.

DESIGN PHILOSOPHY

HISTORY

Our design philosophy is rooted in a love of the game and our admiration for classic courses like St. Andrews Old Course, Pinehurst #2, National Golf Links, Cypress Point, Prairie Dunes, Seminole, Merion and Oakmont to name a few.

STRATEGY

Through the careful placement of hazards, we strive to create golf courses with strategic angles that encourage players to thoughtfully navigate their way around the golf course.

AESTHETICS

Whether the project site is a flat cornfield or a seaside linksland, our goal is to create a golf course that is interesting, scenic and beautiful.

VARIETY

All great golf courses are memorable. One of the best ways to make a lasting impression is in the form of different hole lengths, angles, strategies and green complex designs.

PLAYABILITY

While we aim to create golf courses that can challenge the best players, our overriding objective is to create courses that are both fun and playable for the average golfer. These are achieved through careful analysis related to forward tee and hazard placement.

ENVIRONMENTAL LEADERSHIP

With every design, it's critical to preserve the natural environment. We strive to create courses that protect the environment and seamlessly blend into their surroundings.

200

NEW
COURSES

150

RENOVATED
COURSES

57

YEARS IN
BUSINESS

42

COUNTRIES

EXTENSIVE EXPERIENCE

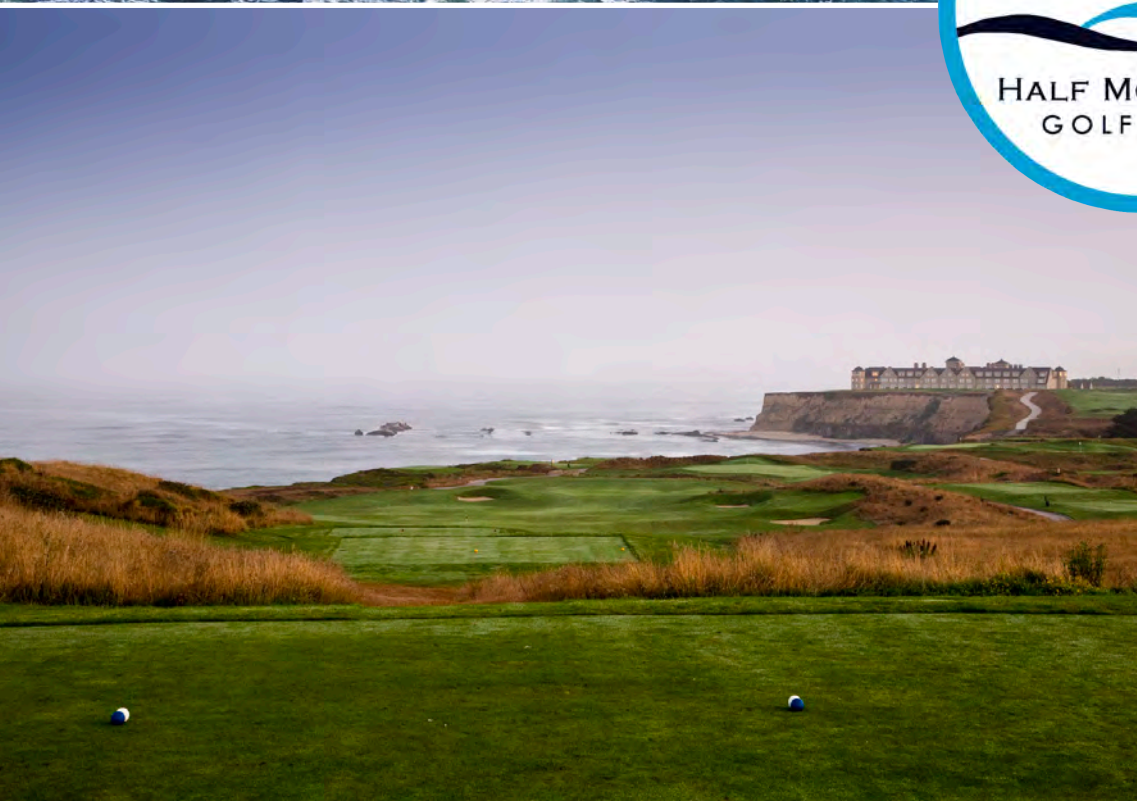


NEW DESIGNS



Half Moon Bay Links *(Half Moon Bay, CA)*

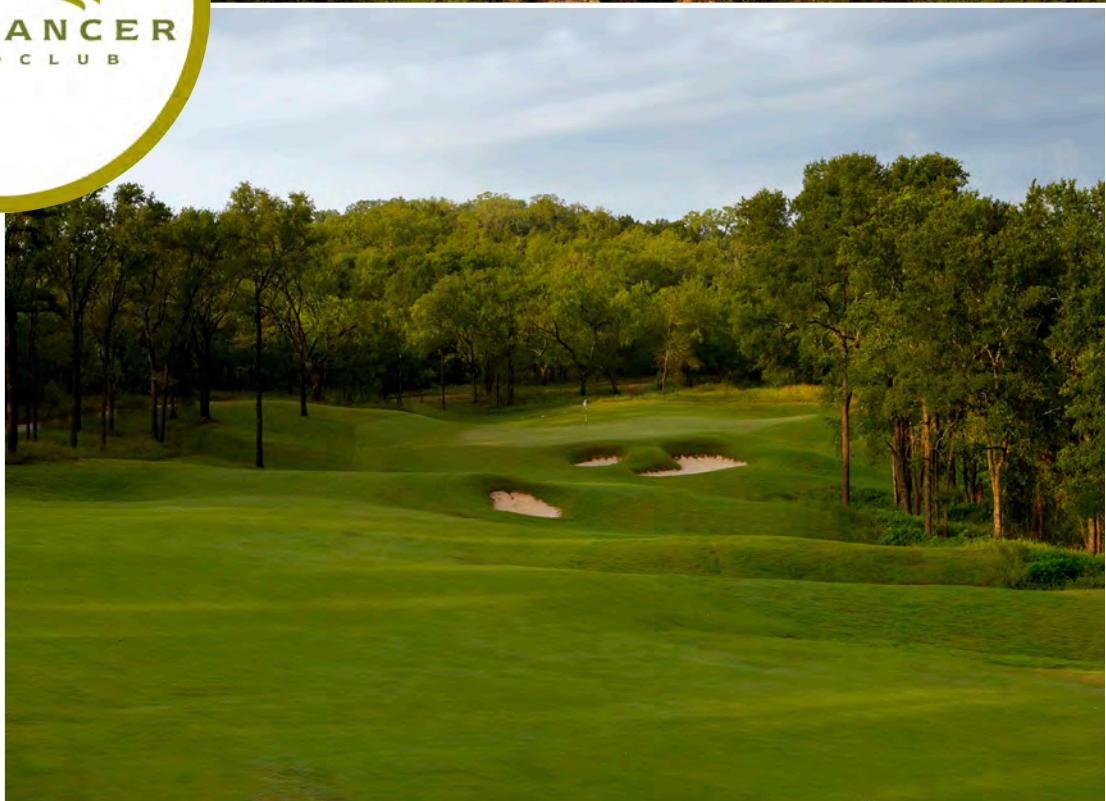
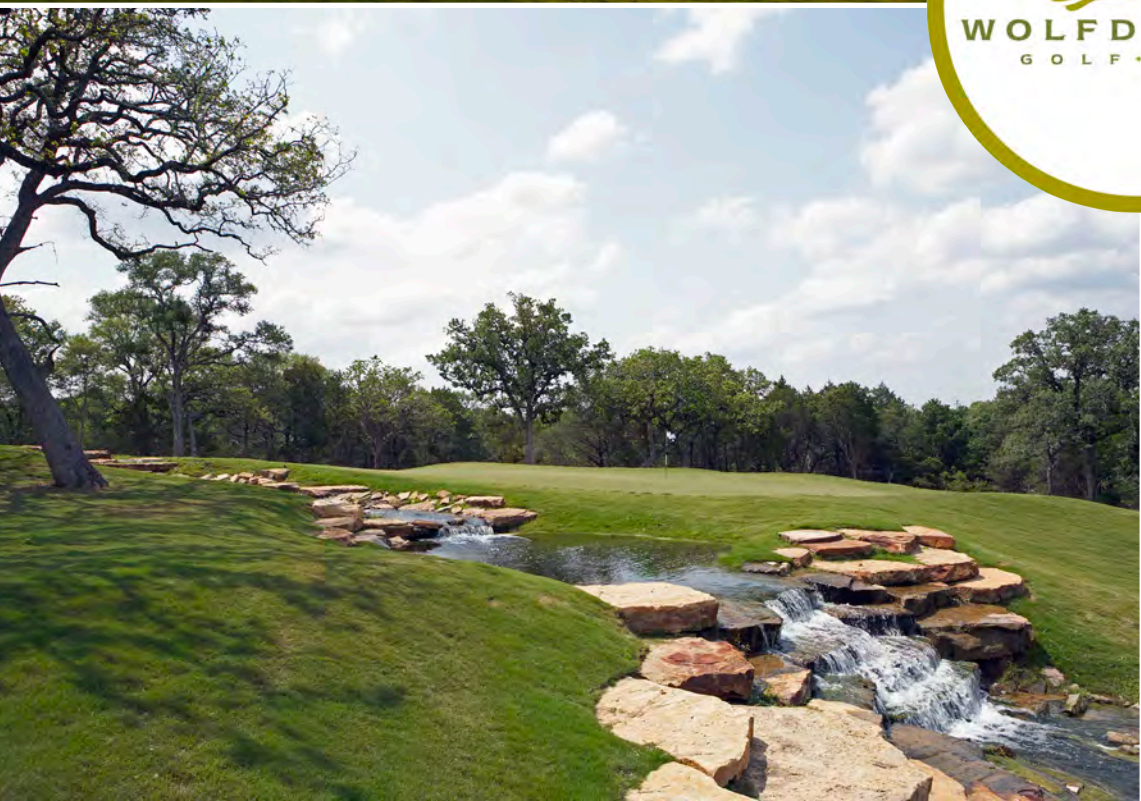
It is not often that one finds two spectacular golf courses with distinctively different designs in the same fantastic location. With sweeping ocean vistas and the majestic Ritz-Carlton Hotel, these two celebrated San Francisco area golf courses, form one of the most impressive resorts in the world. From the firm and fast links style of the Ocean Course to the American traditional parkland style of the Old Course, with its iconic cypress trees, all leading to one of the most photographed final holes in golf – golfers are guaranteed a landscape that provides inspiration every time.





Wolfdancer Golf Club *(Lost Pines, TX)*

Named one of the “Best Resort Courses” by Golfweek Magazine, Wolfdancer Golf Club’s picturesque course takes golfers through rolling prairies, heavily-wooded ridgelines, and river valleys lined with pecan trees. While at the Hyatt Lost Pines Resort, players enjoy scenic views of the lower Colorado River as it winds through the course’s finishing holes. As part of a resort expansion, in the summer of 2022, we created four new holes and a full renovation of the remaining 14 holes and practice area are in planning.





Bay Harbor Golf Club *(Petoskey, MI)*

On what was an abandoned shale quarry and cement factory site perched high above Lake Michigan, the Hills•Forrest•Smith team created a 27-hole layout with three distinct loops—the Links, the Quarry and the Preserve Nines. Stretching nearly three miles along the shoreline, the three nines offer gorgeous water views, dramatic rock quarry features and a pristine northern Michigan forest landscape in which to enjoy the strategic golf layout as well as the many other amenities of this world-class resort and yacht club.





Oitavos Dunes (*Cascais, Portugal*)

The Oitavos Dunes setting is highly dramatic, with magnificent views of the Sintra Mountains, the Atlantic Ocean and the westernmost point of continental Europe. Umbrella pines planted more than 50 years ago are a feature on many of the outward nine and the sand dunes preserved by the family over generations provide a true links experience. This “Top 100 in the World” course was designed to maintain and preserve the unique characteristics of the land. In doing so, we created Europe’s first “Audubon Gold Signature Sanctuary” course.





Sand Golf Club (*Jönköping, Sweden*)

Following the completion of the highly-acclaimed Hills Golf Club, with its “rocky and rolling” terrain near the west coast of Sweden, our client, Martin Sternberg, thought it would be fun to create a “rollicking” links-like course on sandy farmland in the central region of Sweden. So, that what’s we did! The physically-demanding and visually-dramatic layout was immediately recognized as one of the “Top 100 Courses Outside the United States” by Golf Digest.





Journey at Pechanga (*Temecula, CA*)

Nestled in the foothills of the Pechanga Indian Reservation in scenic Temecula, California, Journey was designed with environmental responsibility and a keen sensitivity to preserving the beautiful and historic tribal lands and rich culture of the Pechanga Band of Luiseño Indians. Journey's layout, which rises and falls some 300 feet in 18 holes, also takes full advantage of the majestic scenery of the Temecula Valley. Journey winds its way across the Pechanga River, providing spectacular views of the canyons and ravines that are native to the Valley.





Bighorn Golf Club - Mountains (*Palm Springs, CA*)

Nestled in the foothills of the Santa Rosa Mountains, Bighorn Golf Club is one of the premier golf communities anywhere in the world. The Mountain Course provides commanding views of Palm Desert and the Coachella Valley. It was the host of the Skins Game from 1992 to 1995 and proved to be a spectacular location for compelling TV golf between some of the games greatest players like Jack Nicklaus, Arnold Palmer and others.





Paraiso Del Mar *(La Paz, Baja California Sur, Mexico)*

Located on the Mogote Peninsula and a short ferry ride from La Paz is Paraiso del Mar Golf Club. Here, the Hills Forrest Smith team carefully routed the golf course through the natural dunescape to create a unique links golf experience that provides dramatic views of the Sea of Cortez. The golf course serves as the anchor for the private resort community with mile-long stretches of secluded beach and serves as a mecca for divers, sport fisherman and ocean-lovers. It's authentic Mexico at its very best; unspoiled, serene and full of character.





RENOVATION/RESTORATION



Oakland Hills C.C. - North *(Bloomfield Hills, MI)*

Very few Clubs have a tradition as rich as Oakland Hills Country Club. Home of two Donald Ross designs, the North Course is a wonderful, more playable, version of its big brother to the South. Having worked with the Club for over thirty years, we were asked to update the North Course in preparation for the 2016 U.S. Amateur. The end result was a resounding success. The course proved to be a great test for the world's best amateurs and at the same time made it even more fun and playable for the members.





Westmoreland Country Club (*Wilmette, IL*)

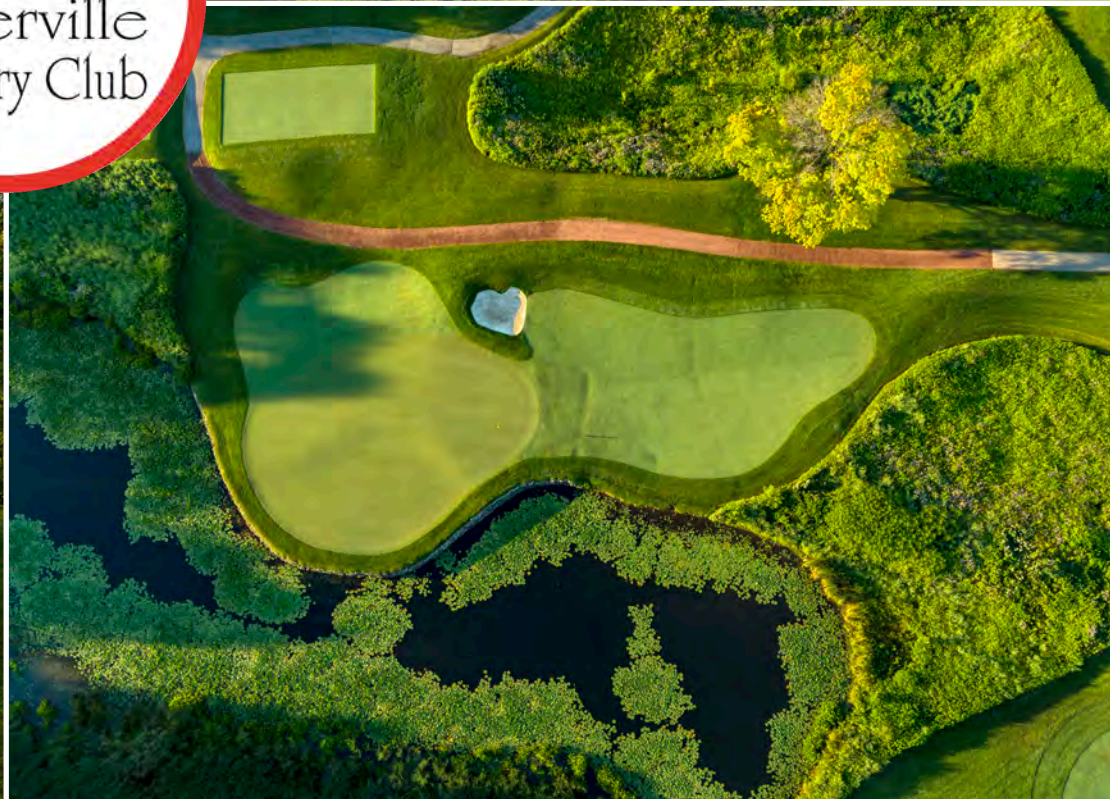
Originally founded in 1911, Westmoreland Country Club has a storied history that dates back to the Golden Age of Golf. Originally designed by William Watson, the course was later modified in 1920 by William Langford and A.W. Tillinghast. Over the past three decades, we have assisted the Club with various improvements to the course. The most recent work included rebuilding bunkers, squaring tees, expanding fairways and selective tree management. The result has restored a classic 'old school' vibe that is unmistakable.





Naperville Country Club *(Naperville, IL)*

Golf Course Architects can be problem-solvers. When we renovated Naperville Country Club, we addressed practice area safety concerns; eliminated seven blind-shot holes with some creative re-alignments; added 200 yards of length; found space for a new maintenance facility with superior access; and created 100 additional parking stalls plus room for a pool and tennis complex. All this, in addition to improved aesthetics, strategy and playability throughout the course, was accomplished on a mere 126 acres in advance of the Club's 100th anniversary in 2021.





Bonita Bay Club *(Bonita Springs, FL)*

One of the preeminent clubs in southwest Florida, the Bonita Bay Club is home to three award winning Hills • Forrest • Smith designs that take full advantage of the natural environment. In 2019, the Club began an ambitious multi-year effort to upgrade each of its five courses, beginning with Bay Island, followed by Marsh the following year. Along with rebuilding the infrastructure of both courses, we were able to recapture much of the original design intent, add more visual interest and make both of the courses a little more playable and fun for the members. In 2025, we'll begin the renovation of the Creekside Course.





Collier's Reserve Country Club *(Naples, FL)*

Originally designed in the mid 1990's, Colliers Reserve Country Club was the first Audubon Cooperative Sanctuary Signature golf course. With an environmentally sensitive approach, our design team created a golf course that sat softly on the land and preserved the beautiful natural setting. Twenty-five years removed from the opening, the Hills·Forrest·Smith team was brought back in to give the course a fresh coat of paint. The results were nothing short of spectacular, restoring the golf course to its original award-winning level while protecting and enhancing the south Florida environment.





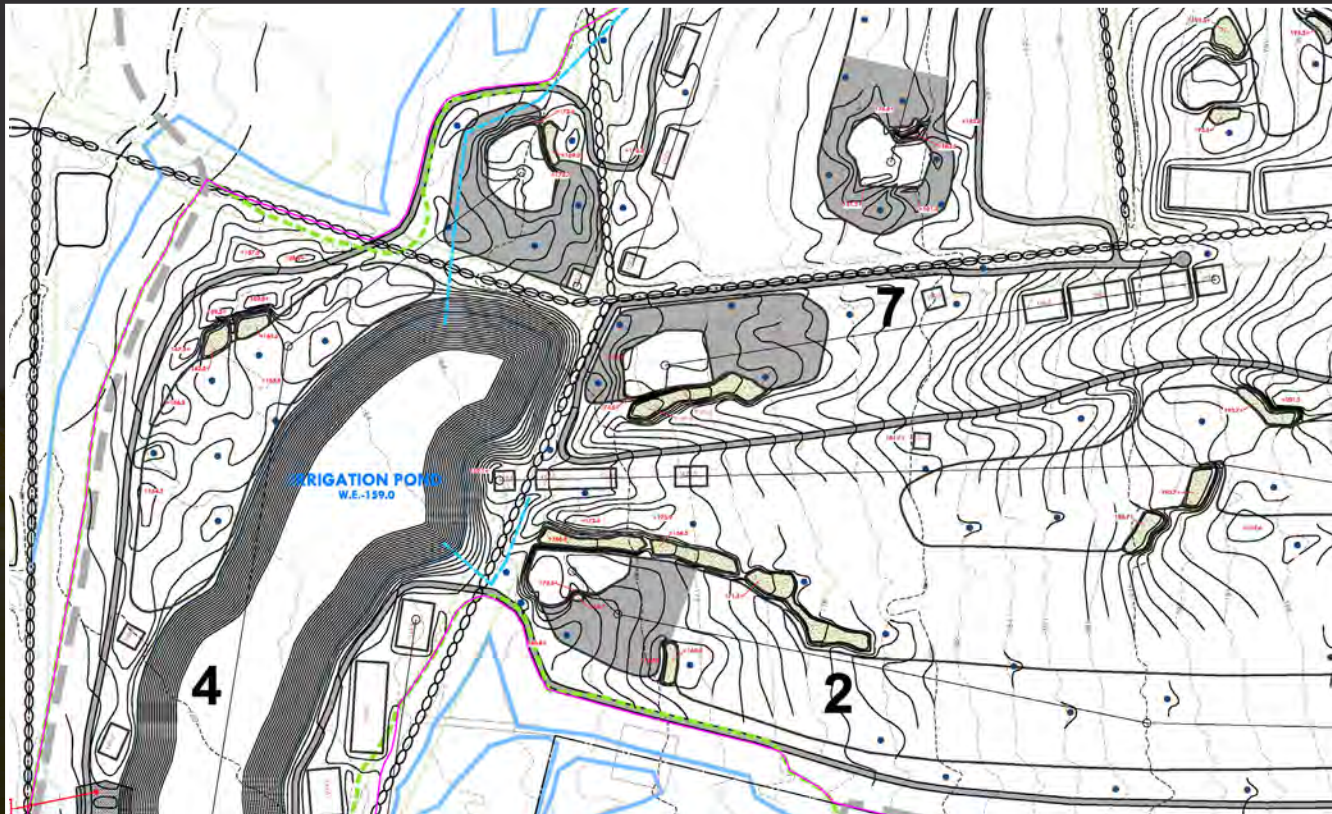
SERVICES

MASTER PLANNING PHASE

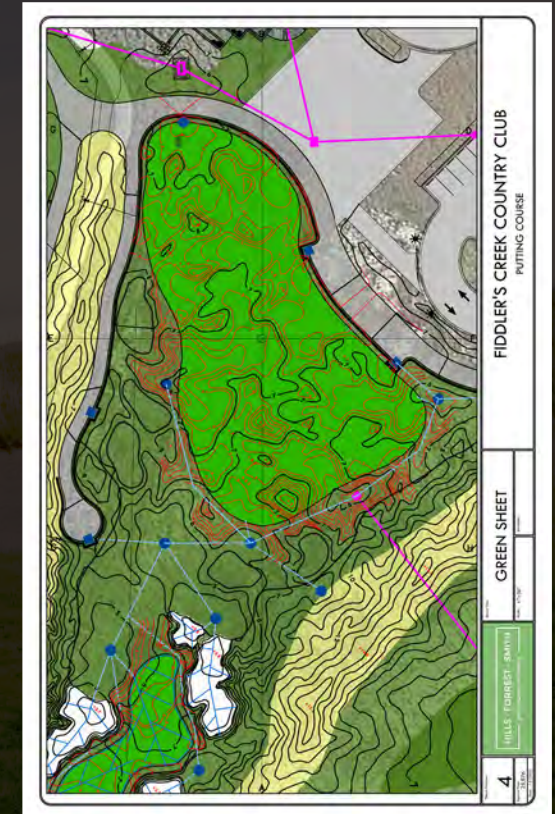
- A 1-2 day workshop to tour the golf course and meet with the long-range planning committee, professional staff, maintenance staff and other key Club personnel to establish the goals and objectives.
- Develop a Master Plan of Improvements showing general improvements such as tee shape and orientation, fairway alignments, bunker design and placement, green design, practice facility enhancements, lake edge refinements, tree management, cart path alignments, and other related improvements. The Master Plan of Improvements includes:
 - *PowerPoint presentation / booklet detailing each individual hole and explaining the basis for the improvement recommendations.*
 - *A series of photo simulations depicting the proposed improvements.*
 - *A cost estimate for the proposed improvements.*
 - *A schedule for phasing and implementation of the improvements*
- Conduct a series of meetings with your team to review and receive feedback on the preliminary draft of the Master Plan and refine as needed. The goal is the creation of a final approved Master Plan that has the support of the committee and can be adopted by the Club going forward.
- Presentation of the Master Plan to the membership based on individual user groups (seniors, ladies, low/mid/high handicaps, etc).

CONSTRUCTION DOCUMENT PHASE

- If necessary, develop a preliminary grading plan at 1-foot contour interval to assist with a cut and fill balance for the entire project.
- Develop detailed construction drawings and specifications to aid in bidding and construction. Hills·Forrest·Smith construction documents are some of the most detailed in the industry which ensures the golf course is built on time, on budget and to the architect's design intent.



Construction Drawing Example



Green Sheet Detail

CONSTRUCTION PHASE

- If applicable, Hills·Forrest·Smith will help facilitate the tender process, tabulate and analyze the construction proposals and assist the owner in the selection of a golf course contractor.
- Make visits during construction to provide direction for the contractor, monitor the progress of construction, make design refinements if necessary and ensure the design intent is being met.
- Review and approve contractors' applications for payment, make final inspection of the construction when the work has been completed, and review final payment.





HILLS · FORREST · SMITH

golf course architects

WWW.HILLSFORRESTSMITH.COM